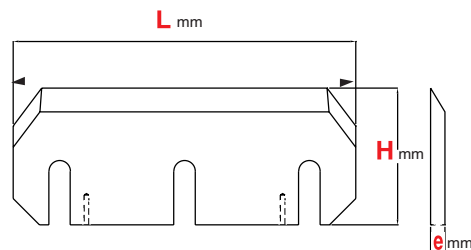
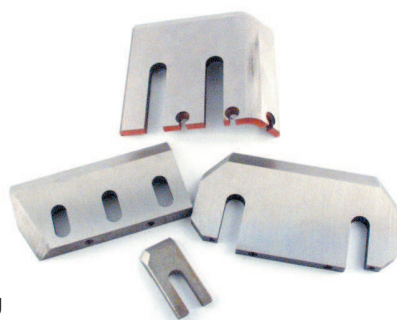


# COUTEAUX DE CANTER



CANTER AND SLABBER - CANTER MESSER  
 CUCHILLA DE CANTER - COLTELLI CANTER



**Composition chimique**  
 Chemical composition  
 Chemische Zusammensetzung  
 Composición química  
 Composizione chimica

**Dureté**  
 Hardness  
 Härte  
 Durezza  
 Durezza

C	Si	Mn	Cr	Mo	V
0.5	1	0.5	8	1,5	0,5

54 - 56 HRC

REF MACHINES	L	H	e	CODE	CANTER
BONGIANNI	66	70	10	FERS667010	
	93	120	15	FERS9312015S	
	93	120	15	FERS9312015I	
	93	120	15	FERS9312015p	
	144	120	15	FERS14412015	
	145	162	10	FERS14516210	
	158	125	15	FERS15812515	
CAE	250.8	125.4	12.7	FERS1047	
COSTA	38	97	10-5/7.5	FERS1570	
	38	97	10-5/7.5	FERS1571	
ESTERER	197	110	11.85	FERS1052	
	200	110	12	FERS20011012	
	289	115	12	FERS28911512	



REF MACHINES	L	H	e	CODE	CANTER
EWD/WUSTER ET DIETZ	62	56	10	FERS625610	
	70	140	12	FERS7014012I	
	70	140	12	FERS7014012p	
	69,2	140	12	FERS1132	
	69,2	140	12	FERS1133	
	75	39	15.9/9	FERS1583D	
	75	39	15.9/9	FERS1583G	
	79	70	9/14	FERS1566	
	79	102	11/15.25	FERS1567	
	79	102	11/15.25	FERS1568	
	80	120	15	FERS1602	
	80	120	15	FERS1603	
	145	52	26	FERS1181	
	288	115	12	FERS1070	
HEINOLA AHLSTROM	240	130	12	FERS24013012	
	245	150	12	FERS24515012I	
	245	150	12	FERS24515012p	
	250	130	12	FERS25013012	
KOCKUM ESTERER	30	50	9.5	FERS1049	
	30	50	9.5	FERS1048	
	35	75	12.25	FERS1051	
	35	75	12.25	FERS1050	
	54	60	15	FERS546015	
LBL	185	90	18	FERS1053	
	185	90	18	FERS1054	

# COUTEAUX DE CANTER



CANTER AND SLABBER - CANTER MESSER  
 CUCHILLA DE CANTER - COLTELLI CANTER

REF MACHINES	L	H	e	CODE	CANTER
LINCK	76	35	20	FERS1641	
	92	105	12	FERS9210512	
	92	105	12	FERS9210512s	
	100	40	12	FERS1004012	
	100	40	12	FERS1004012S	
	105	41	8	FERS105418	
	105	41	12/22	FERS1074512	
	105	50	10	FERS1055010	
	105.5	50	10	FERS10555010	
	107	45	12	FERS10745121	
	120	90	10	FERS1209010	
	120	95	10	FERS1209510	
	120	95	10	FERS1057	
	130	48	8	FERS1215	
	140	95	10	FERS1409510	
	184	108	14	FERS18410814	
	215	152	12	FERS21515212	
	216	152	12	FERS1058	
	270	152	20	FERS1059	
	LINDNER	37.5	100	10	FERS1055
37.5		100	10	FERS1056	
SAWQUIP	130	95	12	FERS1578D	



130	95	12	FERS1578G	
140	165	9.5	FERS14016595	
163.14	139.7	9.3	FERS1139	
163.53	150.82	9.47	FERS1579D	
163.53	150.82	9.47	FERS1579G	
165	88	9.5	FERS1033	
165	165	9.5	FERS1034	
165	165	9.5	FERS1035	

## SEGEM

40	65	14/7	FERS1211	
40	65	14/7	FERS1060	
100	140	12	FERS10014012D	
100	140	12	FERS10014012G	

## TAYME

158	180	20	FERS1565	
-----	-----	----	----------	--

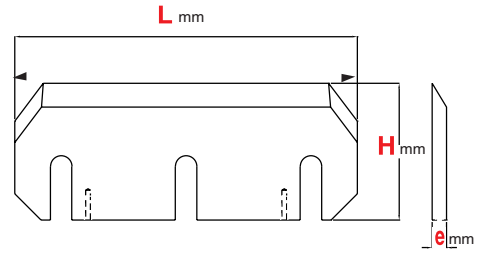
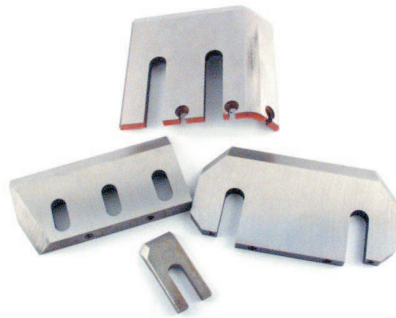
## VESTO

74.5	19.9	94.5	FERS1574	
74.5	19.9	94.5	FERS1575	
90	25	10	FERS902510	

# COUTEAUX DE SLABBER



SLABBER KNIVES- SLABBER MESSER  
CUCHILLA DE ESLABER - COLTELLI SLABBER



**Composition chimique**  
Chemical composition  
Chemische Zusammensetzung  
Composición química  
Composizione chimica

**Dureté**  
Hardness  
Härte  
Durezza  
Durezza

C	Si	Mn	Cr	Mo	V
0.5	1	0.5	8	1,5	0,5

54 - 56 HRC

REF MACHINES	L	H	e	CODE	SLABBER
BONGIOANNI	125	120	15	FERS1557	
	125	120	15	FERS1558	
	144	120	15	FERS14412015	
	247.5	110	15	FERS1069	
ESTERER	54	60	15	FERS546015	
	288	115	12	FERS1070	
LBL	95	60	22	FERS956022D	
	95	60	22	FERS956022G	
	105	83	22	FERS1501	
	105	83	22	FERS1500	
	105	83/57	22	FERS1584D	
	105	83/57	22	FERS1584G	
	218	100	18	FERS1102	
	235	100	18	FERS1072	
	235	100	18	FERS1071	
GILLET/PRIMULTINI	114	80	20	FERS11408020	